

SL

96/

SL  
96/





02. Cockpit







04. Salon



05. Salon



06. Wheelhouse



07. Owner's cabin





08. Owner's bathroom



09. Guest cabin



10. Flying bridge



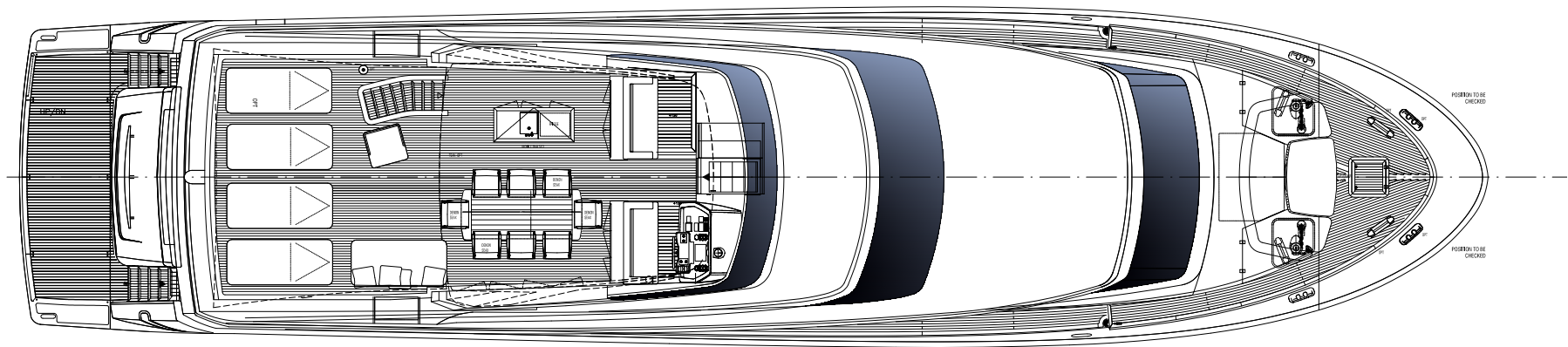
11. Flying bridge

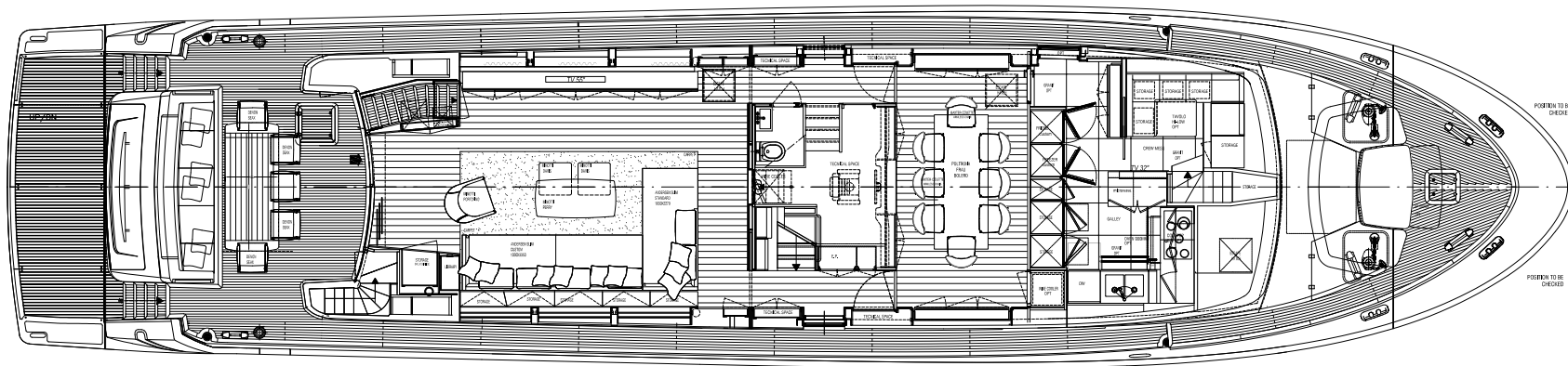




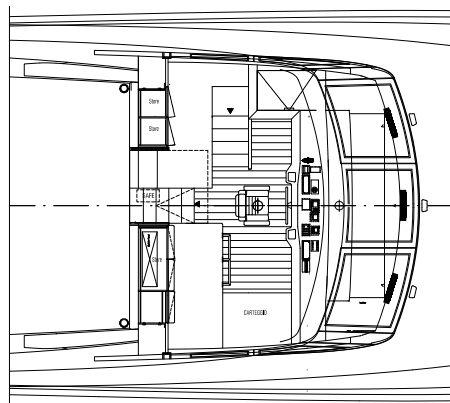
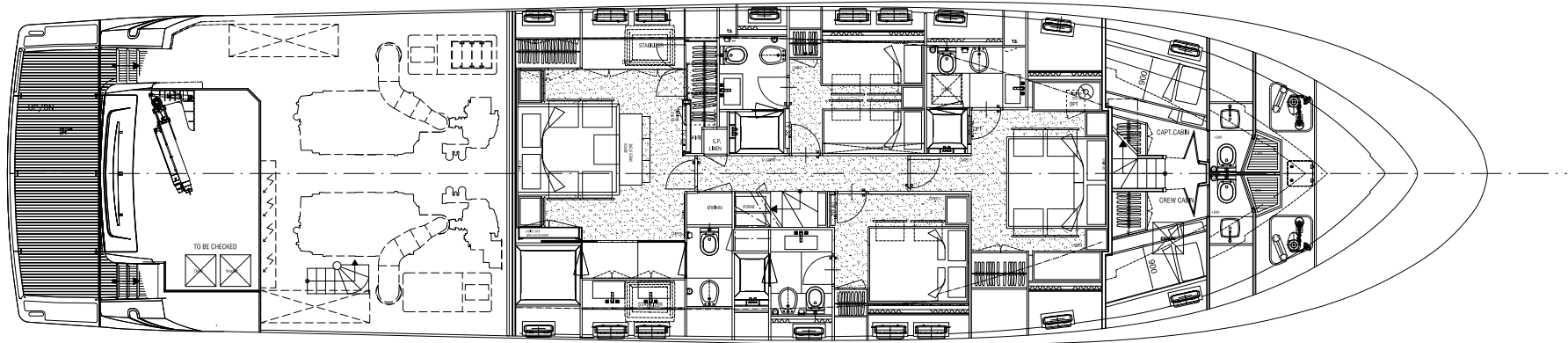
12. Bow











Transformable VIP's cabin

Costruttore/Builder	Sanlorenzo
Modello/Model	SL96
Anno di Costruzione/Year Build	2018
Lunghezza fuori tutto/Length overall	29,10 m
Lunghezza scafo/ Hull length	23,98 m
Larghezza/Beam	6,75 m
Visibile a/Lying	La Spezia
Bandiera/Flag	Malta
Materiale scafo/Hull material	GRP
Motori/Engines	2 x MTU 16V2000M86
Potenza motori/Engines power	2 x 2.216 Hp
Ore Motori/Engine Hours (up to 30.01.20)	428 hrs
Velocità Massima/ Max Speed	28 kn
Velocità di Crociera / Cruise Speed	25 kn
Generatori/Generators	2 x 45 kW
Ore generatori/Generators hours (up to 30.01.20)	999 hrs + 997 hrs
Cassa carburante/Fuel Tank	11.500 l
Cassa acqua dolce/Fresh water tank	1.900 l
Prezzo/Price	€ 5.500.000
IVA/VAT	Italian Leasing Ongoing

## OPTIONS LIST

---

### SL96/ 684

---

#### INTERNI

---

##### Layout

---

Layout con quattro cabine ospiti nel ponte inferiore: cabina armatoriale a centro nave, cabina VIP a prua. Due cabine equipaggio a prua con ingresso dalla cucina.

---

##### Materiali

---

Pavimento in parquet ciliegio nel salone principale, in sala da pranzo e in timoneria, granito in cucina, moquette nelle cabine ospiti e vinilico in zona equipaggio. Paratie in rovere; ciellini a contrasto in rovere, pelle e laccato; mobili in rovere e pelle. Marmo calacatta nel bagno giornaliero e nei bagni ospiti.

---

##### Arredamento e Optional

---

Arredamento Minotti nel salone principale; tavolo Poltrona Frau e n.8 sedie Baxter Colette in sala pranzo; cucina Boffi; extra isolamento tra la camera armatoriale e la sala macchine; cassaforte nella cabina armatoriale, strisce led sotto tutti i letti ospiti; zanzariere nelle cabine ospiti; n.4 oblò grandi aggiuntivi

---

#### ESTERNI

---

##### Pozzetto di poppa

---

Divano, tavolo con movimento slide del top e n.3 sedie addizionali

---

#### INTERIORS

---

##### Layout

---

Four guest cabins in lower deck layout: master's cabin in amidship, VIP cabin at bow. Two crew cabins at bow in lower deck with access from the galley in the main deck.

---

##### Materials

---

Cherry parquet floor in the main salon, in dining room and wheelhouse, granite floor in the galley, moquette floor in guest cabins and vinyl floor in crew area. Oak bulkheads; oak, leather and lacquered wood ceilings; oak and leather furniture. Calacatta marble in daily a guest cabins restroom.

---

##### Furniture and Options

---

Minotti furniture in the main salon; Poltrona Frau table and no. 8 Baxter Colette chairs in the dining room; Boffi kitchen; extra insulation between master's cabin and engine room; safe in master's cabin; led stripes under guest beds; mosquito nets in guest cabins; no. 4 additional oversized portholes

---

#### EXTERIORS

---

##### Stern Cockpit

---

Sofa, table with teak top and sliding system, no. 3 additional chairs

---

## OPTIONS LIST

---

### SL96/ 684

---

#### Area di Prua

---

Tavolo con movimentazione up/down elettrica

---

#### Flybridge

---

Hardtop, Pavimento in teak, tendalino di poppa con pali in carbonio, doccia, arredamento

---

Paola Lenti, mobile bar, tavolo, n.8 sedie Dedon Seax

---

#### ELETRONICI DI NAVIGAZIONE

---

##### Timoneria

---

N.2 Display a colori multifunzione (plotter, radar, GPS); Schermo touch screen gestione utenze di bordo; indicatore di velocità, profondità, vento e temperatura; indicatore angolo di barra; autopilota; VHF; upgrade Raymarine gold pack

---

##### Fly Bridge

---

N.1 Display 12" a colori multifunzione (plotter, radar, GPS); indicatore di velocità, profondità, vento e temperatura; indicatore angolo di barra; autopilota; VHF

---

#### ANTENNE SATELLITARI

---

Antenna ricezione WiFi porto; TV Sat Seatel ST24E; n.1 radome vuoto Seatel ST24, GPS, VHF

---

#### AUDIO VIDEO

---

##### Ponte Principale

---

Salone: TV 55" con sistema up/down; amplificatore multi zona con air play, kit home theatre composto da subwoofer, n. 5 casse integrate nei ciellini, lettore DVD Blue Ray 3D, controllo tramite iPad Mini e docking station

---

Cucina e Dinette: TV 32", impianto HiFi compatto (con lettore DVD integrato) con 2 casse integrate nel ciellino.

---

#### Bow Area

---

Table with electric hi-lo system

---

#### Fly Bridge

---

Hardtop, teak floor, aft canvas with carbon poles; shower, Paola Lenti furniture, bar cabinet, table, no. 8 Dedon Seax chairs

---

#### NAVIGATION ELECTRONICS

---

##### Wheelhouse

---

No. 2 multi-functions monitors (plotter, radar, GPS); touch screen for the utilities on board; speedometer; depth sounder, anemometer, rudder angle sensos, autopilot, VHF, Raymarine gold upgrade Pack

---

##### Fly Bridge

---

No. 1 multi-functions monitor (plotter, radar, GPS); touch screen for the utilities on board; speedometer; depth sounder, anemometer, rudder angle sensos, autopilot, VHF.

---

#### SATELLITE ANTENNAS

---

Port WiFi antenna, TV Sat Seatel ST23E and no. 1 empty Seatel ST24 radome, GPS, VHF

---

#### AUDIO VIDEO

---

##### Main Deck

---

Salon: TV 55" with up/down system; multi-area amplifier with air play; home theatre kit with subwoofer, no. 5 ceilings integrated speakers, Blue Ray 3D DVD reader, iPad mini control with docking station

---

Galley and Dinette: TV 32" compact WiFi system (with integrated DVD reader) with no. 2 ceilings integrated speakers.

---



## OPTIONS LIST

---

### SL96/ 684

---

#### Ponte Cabine

---

Cabina Armatore: TV 46" amplificatore multi zona con air play, kit home theatre composto da subwoofer, n. 2 casse integrate nei ciellini, lettore DVD Blue Ray 3D, controllo tramite iPad Mini e docking station

Cabina VIP: TV 40", impianto HiFi compatto con n.2 casse integrate nel cielino, n.1 lettore DVD Blue Ray 3D

Cabine ospiti: TV 32", impianto HiFi compatto con n.2 casse integrate nel cielino, n.1 lettore DVD Blue Ray 3D, comando con iPad Mini

Cabine equipaggio: TV 22"; autoradio con altoparlanti a cielino

#### Esterni

---

Collegamento con il sistema audio del salone da pozzetto, zona prua e flybridge

#### ELETTRODOMESTICI

---

Cucina: Piano cottura 90 cm, cappa aspirante, lavastoviglie, forno da 90 cm Gaggenau; tritarifiuti Insinkerator, combinato frigo/freezer custom Frigonautica.

Salone MD e sala pranzo: wine cooler Gaggenau; frigorifero Frigonautica; icemaker Vitrifrigo

Flybridge: frigorifero Frigonautica; friggitrice Gaggenau.

Garage: lavatrice e asciugatrice Miele

#### Lower Deck

---

Master's cabin: TV 46" multi-area amplifier with air play; home theatre kit with subwoofer, no. 5 ceilings integrated speakers, Blue Ray 3D DVD reader, iPad Mini control with docking station

VIP cabin: TV 40" compact WiFi system with no. 2 ceilings integrated speakers

Guest cabins: TV 32"; compact WiFi system with no. 2 ceilings integrated speakers, iPad Mini control

Crew cabins: TV 22"; car audio system with ceiling integrated speakers

#### External areas

---

Connection with main salon audio-video system in cockpit, bow area and flybridge

#### HOUSEHOLD APPLIANCES

---

Galley: 90 cm cooktop, extractor hood, dishwasher, 90 cm oven by Gaggenau; waste disposal by Insinkerator; combined fridge/freezer custom by Frigonautica.

MD Salon and dining room: wine cooler by Gaggenau; fridge by Frigonautica; icemaker by Vitrifrigo

Flybridge: fridge by Frigonautica; fryer by Gaggenau

## OPTIONS LIST

---

### SL96/ 684

---

Cabine ospiti: frigorifero Vittrifrigio in cabina armatoriale e VIP

---

Varie: aspirapolvere centralizzato con n.4 prese nel corridoio cabine; impianto internet WiFi

---

4G hotspot

---

### MACCHINARI ED EQUIPAGGIAMENTO

---

#### Attrezzature di coperta

---

N.6 luci subacquee; impianto lavaggio ponte con innesti a poppa e prua; impianto aria compres-

---

sa; spiaggetta di poppa lift con movimentazione elettroidraulica, passerella elettroidraulica,

---

scaletta bagno manuale

---

#### Sistemi di ormeggio, manovra, stabilizzazione ed assetto

---

Elica di poppa e di prua, flaps elettroidraulici; n.2 verricelli elettrici da tonneggio 2200W; n.2

---

verricelli salpa ancore elettrici 4000W; pinne stabilizzatrici con funzionamento in navigazione e

---

all'ancora, sistema lavaggio catena

---

#### Apparati sala macchine

---

Upgrade secondo generatore da 45 kW; avvolgicavo Glendenning da 100/125A; caricabatte-

---

rie per generatori, inverter per frigo e freezer cucina da 2500W; dissalatore Idromar 230 l/h;

---

addolcitore Idrofast 9100; Sistema filtraggio gasolio Alfalaval; impianto aria condizionata da

---

180.000 BTU/h; n.2 boiler da 100 l

---

#### Sistemi di controllo e allarmi

---

TVCC IP composto da: n.3 telecamere nel pozzetto (n.2 fisse + n.1 360°), n.1 pan&tilt in sala

---

macchine, monitor in timoneria, ripetitore di segnale alla TV dinette equipaggio e monitor nel

---

flybridge

---

Garage: washing machine and dryer by Miele

---

Guest cabins: Fridge by Vittrifrigio in Master and VIP cabin

---

Other: vacuum centralized with no. 4 sockets; internet WiFi 4G hotspot"

---

### MACHINERY AND EQUIPMENT

---

#### Deck equipment

---

No. 6 underwater lights; bridge washing system with grafts both in starboard and portside;

---

compressed air system; lifting system for swimming platform, electric-hydraulic transom gang-

---

way, manual swim ladder

---

#### Mooring, maneuvering, stabilizing and trim adjustment systems

---

Bow and stern thruster, no. 2 electric-hydraulic flaps, no. 2 winches 2200W, no. 2 electric

---

4000W windlasses; electric stabilizers fins with zero speed function; chain washing system

---

#### Engine room equipment

---

Upgrade second generatore to 45 kW; Glendenning 100/125A; 2500W battery charger for

---

gensets, inverter for galley fridge and freezer; Idromar 230 l/h watermaker; Idrofast 9100 sof-

---

tener; fuel filter system by Alfalaval; 180.000 BTU/h air conditioning system; no. 2 100 l boilers

---

#### Control and alarm systems

---

TVCC IP camera system: no. 3 fixed cameras (no. 2 fixed + no. 1 360°), no. 1 pan&tilt camera

---

in engine room, monitor in wheelhouse, signal repeater in crew dinette TV, monitor on fly-

---

bridge

---

Gli elementi decorativi presenti nella brochure, come quadri, soprammobili, spugne ed arredo letto, sono stati messi a bordo per il solo servizio fotografico e non sono inclusi nella vendita.  
The decorative items shown in the brochure, as artworks, ornaments, towels, linens and bed covers were on board for the photo shooting only and they are not part of the offer.